



Criteria	UG	PG
Academic Requirements	<ul style="list-style-type: none"> • Completion of an International Foundation Degree • Completion of A Levels 	Bachelor's Degree- 2.2 (cGPA 2.2/4.0 for BSc or BEng and cGPA 2.6/4.0 for BA or BBA)
English Language Requirements	• IELTS 6.0/6.5 no less 5.5	• IELTS 6.0/6.5 no less 5.5
Tuition Fees	£15,750 – £16,250	£15,750 – £17,950
Intakes	January, September	
Campus	Leicester (England)	
Scholarship	£2,000	



Criteria	UG	PG
Academic Requirements	<ul style="list-style-type: none"> • Completion of an International Foundation Degree • Completion of A Levels • Completion of 4 semesters from universities in Pakistan (55%) 	Bachelor's Degree- 2.2 (60%) 3-year Bachelor's (not Honours) + 1-year Master's (60%)
English Language Requirements	• IELTS 6.0/6.5 no less 5.5	• IELTS 6.0/6.5 no less 5.5
Tuition Fees	£16,500 – £19,500	£17,300 – £19,500
Intakes	January, September	
Campus	London and Hull (England)	
Scholarship	£2,000	

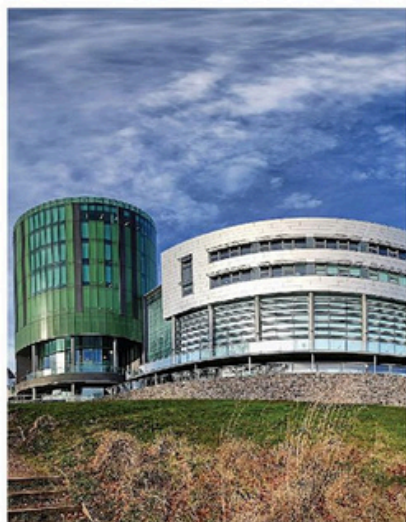
University of Hertfordshire **UH**



Criteria	UG	PG
Academic Requirements	<ul style="list-style-type: none"> HSSC (70% or above) 	Bachelor's Degree- 2.2 (cGPA 2.5/4.0 or 55%)
English Language Requirements	<ul style="list-style-type: none"> IELTS 6.0 no less 5.5 	<ul style="list-style-type: none"> IELTS 6.0 no less 5.5
Tuition Fees	£15,500	£16,950
Intakes	January, September	
Campus	Hatfield (England)	
Scholarship	£2,000	



Criteria	UG	PG
Academic Requirements	<ul style="list-style-type: none"> HSSC/FA/FSC (70% or above) Completion of A Levels 	Bachelor's Degree- 2.2 (50%-59%) 3-year Bachelor's (50%) + 1-year Master's (50%)
English Language Requirements	<ul style="list-style-type: none"> IELTS 6.0 no less 5.5 PTE 59 no less 50 TOEFL 72 no less 20 in speaking 	<ul style="list-style-type: none"> IELTS 6.0 no less 5.5 PTE 59 no less 50 TOEFL 72 no less 20 in speaking
Tuition Fees	£16,000 – £18,000	£16,000 – £19,000
Intakes	January, September	
Campus	Birmingham (England)	
Scholarship	£1,000	



Criteria	UG	PG
Academic Requirements	<ul style="list-style-type: none"> • Completion of an International Foundation Degree • Completion of A Levels • Completion of 2-3 years from universities in Pakistan (60%) 	Bachelor's Degree- 2.2 (cGPA 2.5/4.0 or 60%-69% and cGPA 3.5/5 or 60%-69%) Completion of a Masters (60%)
English Language Requirements	<ul style="list-style-type: none"> • IELTS 6.0 no less 5.5 • LCert 37 no less 33 • TOEFL IBT 80 no less 20 in speaking 	<ul style="list-style-type: none"> • IELTS 6.0 no less 5.5 • LCert 38 no less 33 • TOEFL 88 no less 20 in speaking
Tuition Fees	£16,100- £17,400	£16,100-£21,100
Intakes	January and September	
Campus	Aberdeen (Scotland)	
Scholarship	£2000- £3000	



Criteria	UG	PG
Academic Requirements	<ul style="list-style-type: none"> • HSSC/FA/FSC (70% or above) • Completion of A Levels • Completion of 2 years at university level (Pass) 	Bachelor's Degree- 2.2 (60%) 3-year Bachelor's + 1-year Master's
English Language Requirements	<ul style="list-style-type: none"> • IELTS 6.0 no less 5.5 • LCert 37 no less 33 • TOEFL IBT 75 no less 20 in speaking 	<ul style="list-style-type: none"> • IELTS 6.0 no less 5.5 • LCert 37 no less 33 • TOEFL IBT 75 no less 20 in speaking
Tuition Fees	£17,000-£20,000	£18,000-£21,000
Intakes	January, September	
Campus	Bangor (Wales)	
Scholarship	£1500-£5000	



Criteria	UG	PG
Academic Requirements	<ul style="list-style-type: none"> • Completion of an International Foundation Degree • Completion of A Levels • Completion of 2-3 years from universities in Pakistan (60%) 	Bachelor's Degree (cGPA 2.7/4.0 (2.1) or cGPA 2.5/4.0 (2.2)) Completion of a Masters (60%)
English Language Requirements	<ul style="list-style-type: none"> • IELTS 6.0 no less 5.5 • TOEFL IBT 80 no less 20 in speaking • Lcert Pass no less 33 	<ul style="list-style-type: none"> • IELTS 6.5 no less 5.5 • TOEFL IBT 90 no less 20 in speaking • Lcert Pass with no less 38
Tuition Fees	£20,800-£25,300	£21,500-£25,800
Intakes	January, September	
Campus	Belfast (Northern Ireland)	
Scholarship	£2000- £5000	



Criteria	UG	PG
Academic Requirements	<ul style="list-style-type: none"> • HSSC/FA/FSC (65% or above) • Completion of A Levels • Completion of 2 years from universities in Pakistan (55%) 	Bachelor's Degree (cGPA 2.2/4.0 or 55%) Completion of a Master's degree
English Language Requirements	<ul style="list-style-type: none"> • IELTS 6.0 no less 5.5 	<ul style="list-style-type: none"> • IELTS 6.0 no less 5.5
Tuition Fees	£14,100	£14,950-£15,950
Intakes	January, September	
Campus	South Wales (Wales)	
Scholarship	£2500	



Criteria	UG	PG
Academic Requirements	<ul style="list-style-type: none"> HSSC/FA/FSC (70% or above) Completion of A Levels Completion of 2 years from universities in Pakistan (60%) 	Bachelor's Degree- 2.2 (55%) 2-years Bachelor's + 2-years Master's (1st Class)
English Language Requirements	<ul style="list-style-type: none"> IELTS 6.0 no less 5.5 TOEFL IBT 80 no less 20 in speaking LCert High Pass no less 33 	<ul style="list-style-type: none"> IELTS 6.5 no less 5.5 TOEFL IBT 90 no less 20 in speaking LCert High Pass no less 33
Tuition Fees	£14,900	£15,500
Intakes	January, September	
Campus	London (England)	
Scholarship	£2000- £4000	



Criteria	UG	PG
Academic Requirements	<ul style="list-style-type: none"> HSSC/FA/FSC (70% or above) Completion of A Levels Completion of 2 years from universities in Pakistan 	Bachelor's Degree- 2.2
English Language Requirements	<ul style="list-style-type: none"> IELTS 6.0 no less 5.5 TOEFL IBT 80 no less 20 in speaking PTE 50 no less 46 	<ul style="list-style-type: none"> IELTS 6.0/6.5 no less 5.5 TOEFL IBT 90 no less 20 in speaking PTE 58 no less 50
Tuition Fees	£15,950	£15,950
Intakes	January, September	
Campus	London (England)	
Scholarship	£1000- £4000	



Criteria	UG	PG
Academic Requirements	<ul style="list-style-type: none"> HSSC/FA/FSC (70% or above) Completion of A Levels 	Bachelor's Degree- 2.2
English Language Requirements	<ul style="list-style-type: none"> IELTS 6.0 no less 5.5 	<ul style="list-style-type: none"> IELTS 6.0 no less 5.5
Tuition Fees	£12,100	£13,300- £14,950
Intakes	January, May, September	
Campus	London, Birmingham (England) and Belfast (Northern Ireland)	
Scholarship	£2000-£4000	



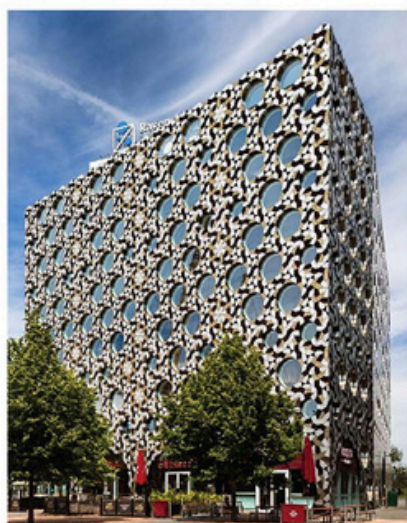
Northumbria University
NEWCASTLE



Criteria	UG	PG
Academic Requirements	<ul style="list-style-type: none"> HSSC/FA/FSC (75% or above) Completion of A Levels Completion of 2 years from universities in Pakistan (55%) 	Bachelor's Degree- 2.2 (cGPA 2.4/5.0)
English Language Requirements	<ul style="list-style-type: none"> IELTS 6.0 no less 5.5 	<ul style="list-style-type: none"> IELTS 6.5 no less 5.5
Tuition Fees	£16,500- £19,750	£17,500- £22,750
Intakes	January, May, September	
Campus	London, Birmingham (England) and Newcastle (England)	
Scholarship	£3000-£5000	



Criteria	UG	PG
Academic Requirements	<ul style="list-style-type: none"> HSSC/FA/FSC (70% or above) Completion of A Levels 	Bachelor's Degree- 2.2 (cGPA 3.0/5.0)
English Language Requirements	<ul style="list-style-type: none"> IELTS 6.0 no less 5.5 TOEFL IBT 80 no less 20 in speaking PTE 51 no less 51 Lcert Pass 	<ul style="list-style-type: none"> IELTS 6.0 no less 5.5 TOEFL IBT 89 no less 20 in speaking PTE 59 no less 59 Lcert High Pass
Tuition Fees	£15,750	£17,325- £18,900
Intakes	January, September	
Campus	London (England)	
Scholarship	£1000-£4000	



Criteria	UG	PG
Academic Requirements	<ul style="list-style-type: none"> Completion of an International Foundation Degree Completion of A Levels 	Bachelor's Degree (cGPA 2.6/4 or 55%) 2-years Bachelor's + 2-years Master's
English Language Requirements	<ul style="list-style-type: none"> IELTS 5.5 no less 5.5 TOEFL IBT 72 no less 20 in speaking PTE 51 no less 51 Lcert High Pass 	<ul style="list-style-type: none"> IELTS 6.0 no less 5.5 TOEFL IBT 72 no less 20 in speaking PTE 54 no less 51 Lcert High Pass
Tuition Fees	£17,000	£17,500- £19,500
Intakes	January, September	
Campus	London (England)	
Scholarship	£3500	



Criteria	UG	PG
Academic Requirements	<ul style="list-style-type: none"> • Completion of an International Foundation Degree • Completion of A Levels • Completion of 2 years from universities in Pakistan 	Bachelor's Degree (cGPA 2.5/4 or 55%) 2-years Bachelor's + 2-years Master's
English Language Requirements	<ul style="list-style-type: none"> • IELTS 6.0 no less 5.5 • TOEFL IBT 79 no less 20 in speaking • PTE 59 no less 59 	<ul style="list-style-type: none"> • IELTS 6.0 no less 5.5 • TOEFL IBT 79 no less 20 in speaking • PTE 59 no less 59
Tuition Fees	£12,000- £14,000	£12,000- £15,000
Intakes	January, September	
Campus	Leeds (England)	
Scholarship	£3000	



Criteria	UG	PG
Academic Requirements	<ul style="list-style-type: none"> • HSSC/FA/FSC (60% or above) • Completion of A Levels 	Bachelor's Degree (60%) 2-years Bachelor's + 2-years Master's (60%)
English Language Requirements	<ul style="list-style-type: none"> • IELTS 6.0 no less 5.5 	<ul style="list-style-type: none"> • IELTS 6.0 no less 5.5
Tuition Fees	£16,800- £20,050	£16,800- £20,050
Intakes	January, May, September	
Campus	Coventry and London (England)	
Scholarship	£1000- £3000	

The University of Law



Criteria	UG	PG
Academic Requirements	<ul style="list-style-type: none"> HSSC/FA/FSC (75% or above) Completion of A Levels 	Bachelor's Degree (55%)
English Language Requirements	<ul style="list-style-type: none"> IELTS 6.0/6.5 no less 6.0/5.5 	<ul style="list-style-type: none"> IELTS 6.5 no less 6.0/5.5
Tuition Fees	£16,700- £17,500	£16,700- £17,500
Intakes	January, May, September	
Campus	London, Birmingham, Bristol, Leeds, Nottingham, Manchester (England)	
Scholarship	£1000-£5000	

University of Bedfordshire



Criteria	UG	PG
Academic Requirements	<ul style="list-style-type: none"> HSSC/FA/FSC (75% or above) Completion of A Levels 	Bachelor's Degree (50% or more)
English Language Requirements	<ul style="list-style-type: none"> IELTS 6.0 no less 5.5 TOEFL IBT 79 no less 20 in speaking PTE 59 no less 59 	<ul style="list-style-type: none"> IELTS 6.0 no less 5.5 TOEFL IBT 79 no less 20 in speaking PTE 59 no less 59
Tuition Fees	£15,500	£15,600-£19,700
Intakes	February, April, June, August, October	
Campus	Luton (England)	
Scholarship	£1000	